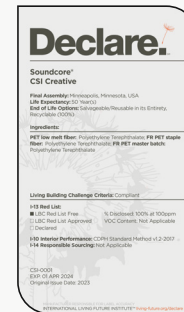


Product Specifications

Product Name	Folded Baffles 004	Warranty	Comes with industry-leading standard warranty.
Product ID	BFL-FLD-004	Flammability	ASTM E84: Class A
Acoustics	0.50 NRC*	Custom	Custom colors and manufacturing services available. Additional charges and lead times may apply.
Lead Time	Lead time is dependent on project size. Contact us for more information.	Maintenance	Vacuum occasionally to remove airborne dust or debris. Mild detergents or soaps may be used to remove stains. For detailed care instructions, refer to the CSI Creative Maintenance Information document.
Durability	Contract		

Material Specifications

	Soundcore®	PoshFelt®
Content	Recycled PET acoustic felt	100% Merino or Karakul wool acoustic felt
Weathering	Colorfast, non-deteriorating, non-hygroscopic	Colorfast, non-deteriorating, non-woven, moisture resistant
Environmental	Recycled PET acoustic felt is 60% post-consumer recycled content and is 100% recyclable. Contributes points toward LEED v4. CDPH v1.2, VOC free, non-toxic, non-allergenic, anti-microbial - does not attract mold and mildew. Compliant with Living Building Challenge criteria & DECLARE Red List Free.	100% organic wool design felt is a rapidly renewable resource and is 100% biodegradable/compostable. Contributes points toward LEED v4. CDPH v1.2, VOC free, no chemical irritants, no formaldehyde, and is free of other harmful substances. Compliant with Living Building Challenge criteria & DECLARE Red List Free.
Variation	PET felt panels are created through a manufacturing process known as 'felting'. This process results in a heathered appearance. Multiple color tones may appear in the same panel. Slight color variations should be expected.	Due to its 100% natural origin, the raw fibers of wool felt contain inclusions and color variations throughout the material. Color matching is not guaranteed between dye lots and inconsistencies may be more prominent in volume that exceed the normal commercial standard.

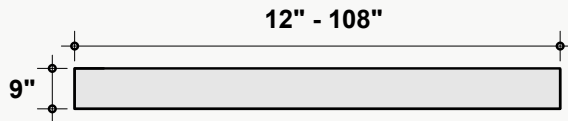


*Approximate. NRC rating may vary due to product dimensions and spacing.

Dimensions

Standard Unit Dimensions

Typical ranges for length and height.

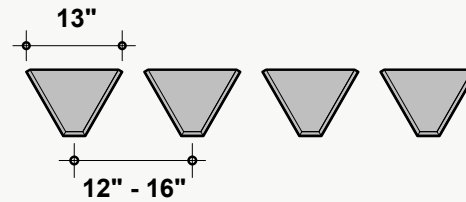


Custom Opportunity

Product dimensions can be manipulated in order to fit your design aesthetic and site conditions.

Standard Unit Thicknesses

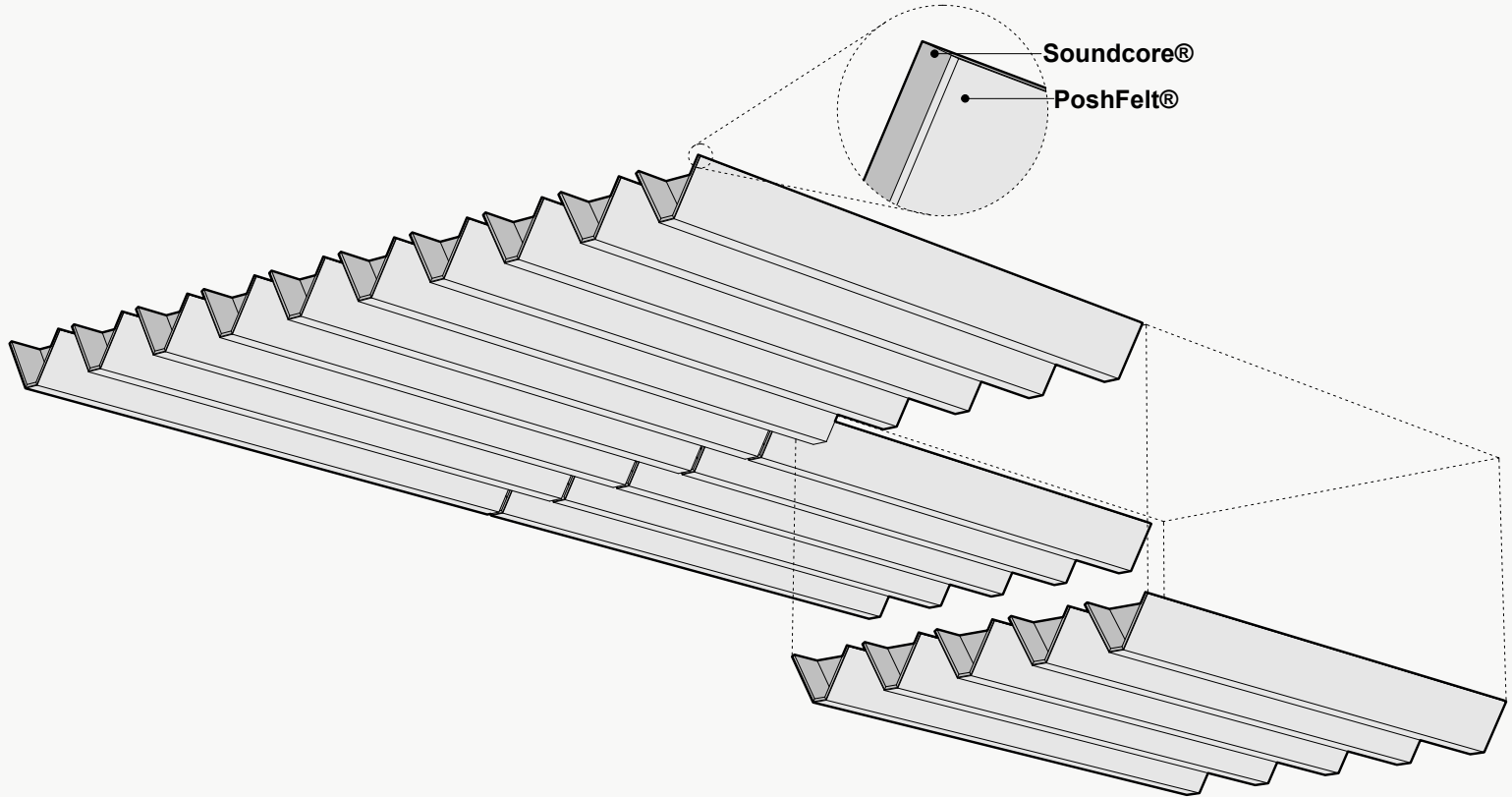
Thickness is independent of material layer selection.



On-Center Spacing

Our standard product spacing is 12" - 16" on-center. Acoustic performance of the product improves as spacing is reduced.

Product Details



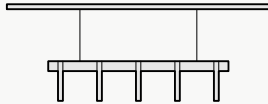
Installation Options

All products and installation methods can be **customized** to meet the unique requirements of your space.

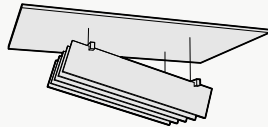
Rail Suspension Advantages

Rail suspension installation methods are designed for fast and easy installation by reducing the amount of suspension points. The rail structure acts as a guide for the baffles, maintaining baffle spacing and orientation while remaining easily customizable to fit most RCP layouts.

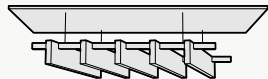
Pre-Defined Spacing



Consistent Angle



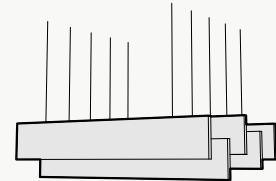
Non-Perpendicular Arrangements



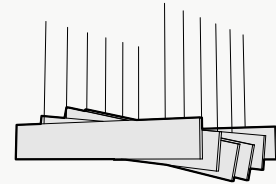
Individual Suspension Advantages

Individual suspension installation methods excel at accommodating irregular layouts. They are the most versatile installation style, and can be customized to fit even the most unique RCP layout.

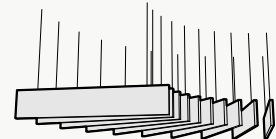
Height Variation



Angle Variation



Non-Linear Arrangements

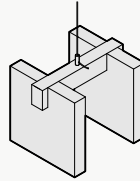


Attachment Methods*

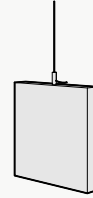
Aircraft Cable

- + Fastest/easiest height adjustment
- + Largest height adjustment range
- + Height and angle versatility
- + Accommodates uneven ceiling surfaces and MEP

Rail Suspension

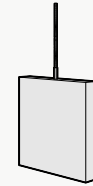
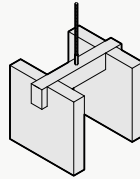


Individual Suspension



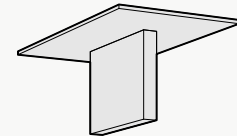
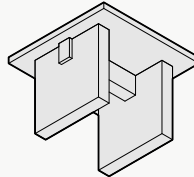
Threaded Rod

- + Reduced product sway
- + Height and angle versatility
- + Accommodates uneven ceiling surfaces and MEP



Mechanical Direct

- + Lowest profile installation method
- + Eliminates product sway
- + Connects to: Unistrut, ACT Grid, flat ceiling surfaces
- + Connections: Magnets, Grid Clips, Panel Clips, Metal Bracket, Custom

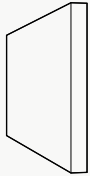


*Not all listed attachment methods may be applicable to this product.

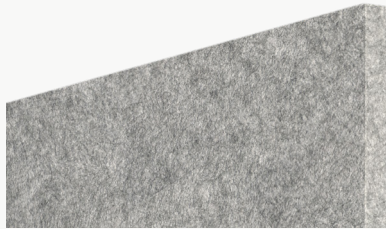
Material Layers

Soundcore®

Our recycled PET felt creates an acoustic barrier, defending against wandering white noise and irritating echoes.

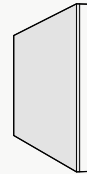


Single Layer
½" Thickness



PoshFelt® Exposed Edge

100% organic, natural wool design felt brings out the best experience in your space with color, comfort, and simple sustainability. Exposed edge products leave the Soundcore® layer uncovered, allowing for unique color combinations.

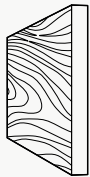


Multi-Layer
Adds ⅛"-¼" to Material Thickness



Soundcore® Wood Textures

Soundcore® wood textures provide the natural aesthetic of wood while maintaining all the acoustic benefits of PET felt. Custom texture opportunities are also available upon request.



Single Layer
½" Thickness



PoshFelt® | 3mm Thickness



PSH005
Black Beauty



PSH161
Black Swan



PSH266
Koala



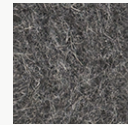
PSH627
Blackberry



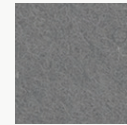
PSH265
Slag



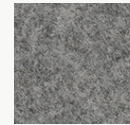
PSH513
Gravel



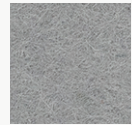
PSH001
Gray Matter



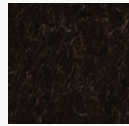
PSH004
Porpoise



PSH176
Warmstone



PSH512
Ash Plume



PSH545
Henna



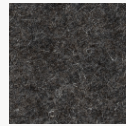
PSH249
French Press



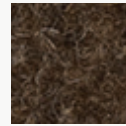
PSH146
Auburn



PSH521
Cocoa



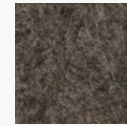
PSH179
Arctic Seal



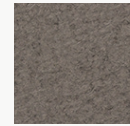
PSH180
Iron Ore



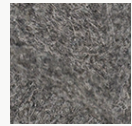
PSH505
Garrigue



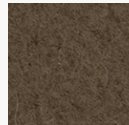
PSH003
Otter



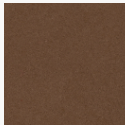
PSH520
Silt



PSH002
Heather



PSH504
Earth



PSH255
Tropical Walnut



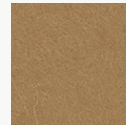
PSH269
Canyon



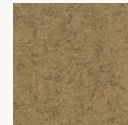
PSH253
Toffee



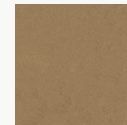
PSH602
Cafe



PSH281
Great Plains



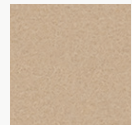
PSH503
Savanna



PSH509
Cairo



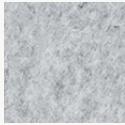
PSH621
Pan



PSH291
Gobi



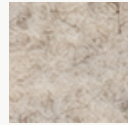
PSH299
Mountain Breeze



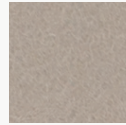
PSH300
Crevasse



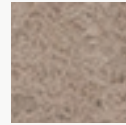
PSH625
Silver Chain



PSH515
Blizzard



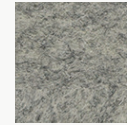
PSH127
Mocha



PSH635
Eggshell



PSH178
Fawn



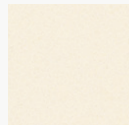
PSH175
Dovetail



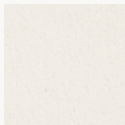
PSH624
Dapple Gray



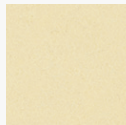
PSH609
Cityscape



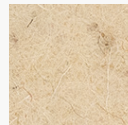
PSH118
Ivory Lace



PSH174
Cotton



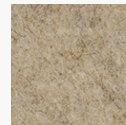
PSH293
Pound Cake



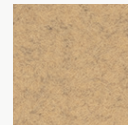
PSH519*
Cupcake



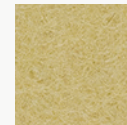
PSH630
Sand Dune



PSH006
Shiitake



PSH301
Tumbleweed



PSH637
Chiffon



PSH304
Sugar Cookie



PSH541
Banana Bread

*6-roll MOQ

PoshFelt® | 3mm Thickness

									
PSH215 Raincoat	PSH622 Corn	PSH295 Sunrise Peach	PSH507 Hive	PSH015 Honey	PSH305 Dandelion	PSH216 Lion's Den	PSH634 Amber	PSH261 Pale Ale	PSH638 Sunflower
									
PSH610 Coral	PSH632 Peach	PSH218 Citrus	PSH532 Harvest	PSH014 Knockout Orange	PSH307 Orange Nectar	PSH633 Clementine	PSH245 Fire Agate	PSH525 Olympus	PSH640 Rusted
									
PSH139 Cayenne	PSH535 Guppy	PSH528 Ferrous	PSH296 Paprika	PSH530 Hot Iron	PSH537 Cardinal	PSH008 Bonfire	PSH308 Scarlet	PSH009 Poinsettia	PSH527 Red Velvet
									
PSH137 Passion Flower	PSH273 Ultraviolet	PSH649 Pomegranate	PSH617 Evening Gown	PSH540 Devil's Food	PSH644 Maroon	PSH210 Sangria	PSH211 Cherry Chutney	PSH212 Vino	PSH514 Red Wine
									
PSH272 Hotwire	PSH302 Heather Pink	PSH202 Crush	PSH647 Eden Rose	PSH643 Rhododendron	PSH560 Schiava	PSH559 Monroe	PSH544 Dragonfruit	PSH309 Allium	PSH205 Mulberry

PoshFelt® | 3mm Thickness



PSH612
Lilac



PSH646
Lupine



PSH274
Amethyst



PSH523
Violet Sky



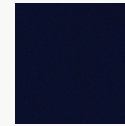
PSH546
Tyrian Plum



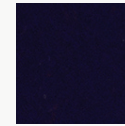
PSH142
Plum Purple



PSH286
Viper



PSH241
Tranquilo



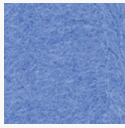
PSH550
Mariana



PSH277
Shade



PSH615
Imagine



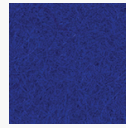
PSH510
Ozone



PSH237
Hotspring



PSH508
Oahu



PSH548
Ultramarine



PSH160
Admiral Blue



PSH239
Speckled Navy



PSH561
Neptune



PSH645
Space



PSH614
Blueberry



PSH502
Pacific



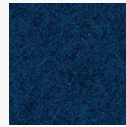
PSH238
Cobalt



PSH152
Blue Nile



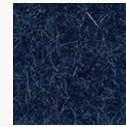
PSH616
Fountain



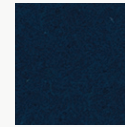
PSH516
Actun



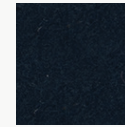
PSH511
Lagoon



PSH636
Navy Blue



PSH260
Twilight



PSH310
Deep Royal



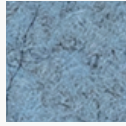
PSH278
Squid Ink



PSH606
Midday



PSH306
Swell



PSH608
Diamond Dust



PSH605
Meander



PSH628
Cozumel



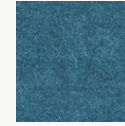
PSH016
Freshwater



PSH650
Waterfall



PSH149
Jamaica Bay



PSH604
Atlantic



PSH648
Aegean



PSH639
Glacier



PSH287
Sea Breeze



PSH631
Adriatic



PSH232
Seaglass



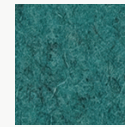
PSH629
Robin's Egg



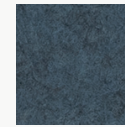
PSH517
Sky Stone



PSH552
Cancun



PSH642
Blue Spruce



PSH623
Steel Gray



PSH564
Jazz

PoshFelt® | 3mm Thickness



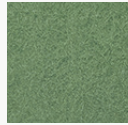
PSH618
Iguana



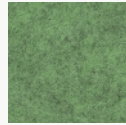
PSH641
Basil



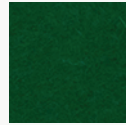
PSH619
Springtime



PSH213
Meadow



PSH303
Feather Moss



PSH226
Grove



PSH298
Peacock



PSH234
Ocean Trench



PSH311
Emerald



PSH626
Evergreen



PSH225
Everglade



PSH164
Fresh Lime



PSH554
Cyber Green



PSH555
Hemlocks



PSH012
Shamrock



PSH228
Forest Haze



PSH227
Succulent



PSH563
Rosemary



PSH501
Mire



PSH506
Bracken



PSH562
Aurora



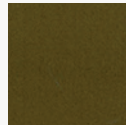
PSH556
Avocado



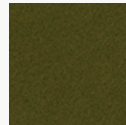
PSH013
Parakeet



PSH611
Haybale

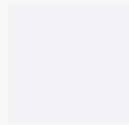


PSH312
Safari

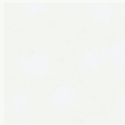


PSH230
Camouflage

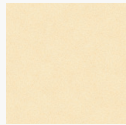
Soundcore® | 1/2" Thickness



SND019
Linen



SND037
Paper



SND134
Oat



SND135
Vanilla Bean



SND105
Sand Dollar



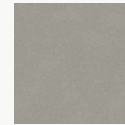
SND109
Macadamia



SND111
Lanai



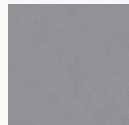
SND130
Buckskin



SND131
Abalone



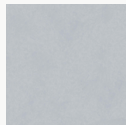
SND125
Chinchilla



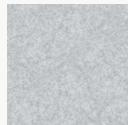
SND118
Anchor



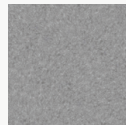
SND126
Wolfhound



SND110
Starry Night



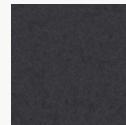
SND102
Morning Fog



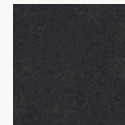
SND114
Lunar Dust



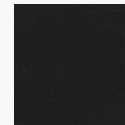
SND034
Granite Peak



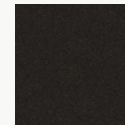
SND132
Cast Iron



SND103
Storm Cloud



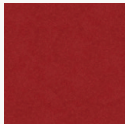
SND038
Inkwell



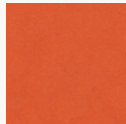
SND122
Briquette



SND127
Burnt Toast



SND108
Ablaze



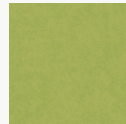
SND104
Pumpkin



SND106
Goldfinch



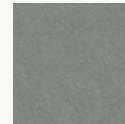
SND113
Gruner



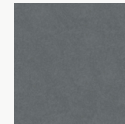
SND107
Grasshopper



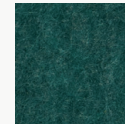
SND136
Clover



SND129
Dried Thyme



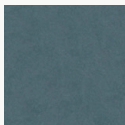
SND115
Mako



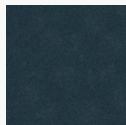
SND137
Cove



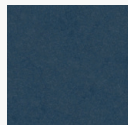
SND112
Tulum



SND121
Apatite



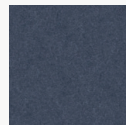
SND123
Chrysocolla



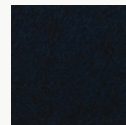
SND117
Serene



SND124
Ice Floe



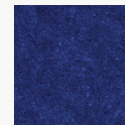
SND128
Arctic Ocean



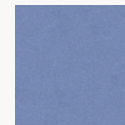
SND133
Galactic



SND116
Blue Marlin






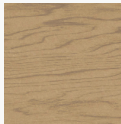
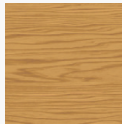
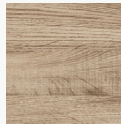
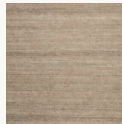








SND101
Commodore



SND042
Denim

Soundcore® Wood Textures | 1/2" Thickness

									
SND716 Dark Teak	SND792 Dark Oak	SND715 Dark Cherry	SND793 Vintage Maple	SND794 Warm Teak	SND714 English Walnut	SND713 Honey Walnut	SND717 Warm Oak	SND790 Natural Teak	SND712 Natural Spruce
									
SND711 Bleached Cherry	SND795 Light Teak	SND709 White Maple	SND791 Gray Oak	SND710 Gray Teak					