

Product Specifications

Product Name	Line Surfaces 015
Product ID	SUR-LNE-015
Acoustics	0.60 NRC*
Lead Time	Lead time is dependent on project size. Contact us for more information.
Durability	Contract

Warranty	Comes with industry-leading standard warranty.
Flammability	ASTM E84: Class A
Custom	Custom colors and manufacturing services available. Additional charges and lead times may apply.
Maintenance	Vacuum occasionally to remove airborne dust or debris. Mild detergents or soaps may be used to remove stains. For detailed care instructions, refer to the CSI Creative Maintenance Information document.

Material Specifications

	Soundcore®	PoshFelt®
Content	Recycled PET acoustic felt	100% Merino or Karakul wool acoustic felt
Weathering	Colorfast, non-deteriorating, non-hygroscopic	Colorfast, non-deteriorating, non-woven, moisture resistant
Environmental	Recycled PET acoustic felt is 60% post-consumer recycled content and is 100% recyclable. Contributes points toward LEED v4, CDPH v1.2, VOC free, non-toxic, non-allergenic, anti-microbial - does not attract mold and mildew. Compliant with Living Building Challenge criteria & DECLARE Red List Free.	100% organic wool design felt is a rapidly renewable resource and is 100% biodegradable/compostable. Contributes points toward LEED v4, CDPH v1.2, VOC free, no chemical irritants, no formaldehyde, and is free of other harmful substances. Compliant with Living Building Challenge criteria & DECLARE Red List Free.
Variation	PET felt panels are created through a manufacturing process known as 'felting'. This process results in a heathered appearance. Multiple color tones may appear in the same panel. Slight color variations should be expected.	Due to its 100% natural origin, the raw fibers of wool felt contain inclusions and color variations throughout the material. Color matching is not guaranteed between dye lots and inconsistencies may be more prominent in volumes that exceed the normal commercial standard.

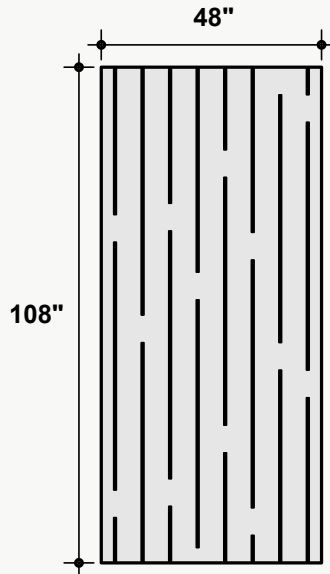


*Approximate. NRC rating may vary due to product dimensions and spacing.

Dimensions

Standard Unit Dimensions

Typical ranges for height and width.

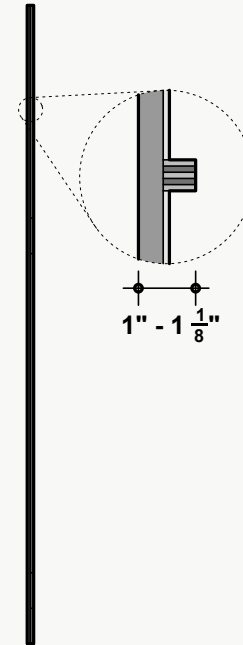


Custom Opportunity

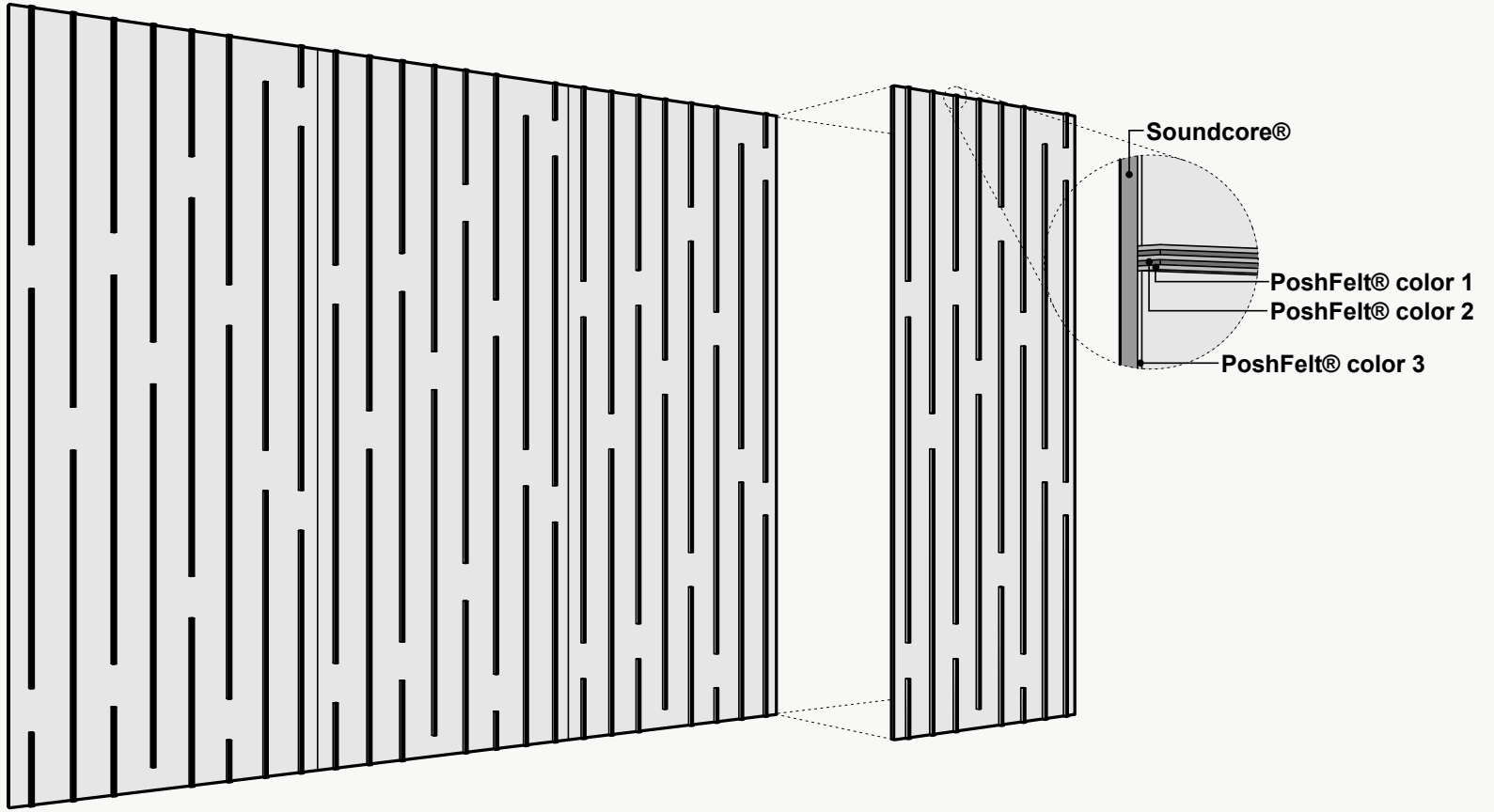
Product dimensions can be manipulated in order to fit your design aesthetic and site conditions.

Standard Unit Thicknesses

Thickness is dependent on material layer selection.



Product Details



Installation Options*

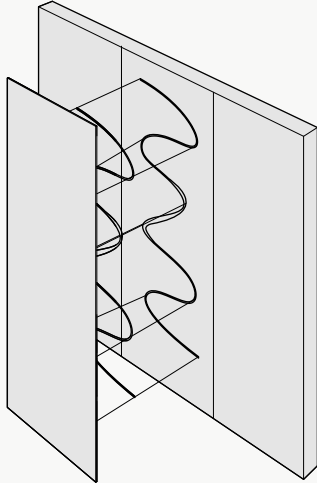
All products and installation methods can be **customized** to meet the unique requirements of your space.

Adhesive Direct Advantages

Attachment solution using an adhesive to apply directly to an existing surface or substrate.

- + Fastest installation time
- + No gap between target surface and product
- + Lowest profile installation option
- + Easiest to install
- + Most versatile installation option

Available methods: Construction Adhesive, Peel & Stick, Custom

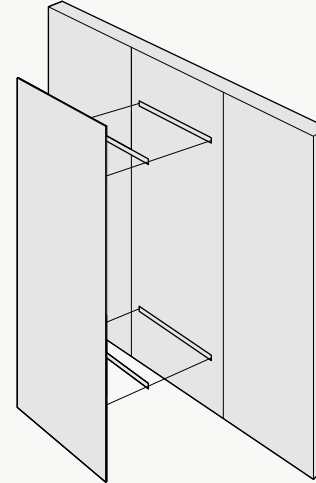


Mechanical Direct Advantages

Attachment solution using physical hardware to attach to an existing surface or substrate.

- + No clamping or dry time necessary
- + Easy to remove and does not damage the substrate when removed
- + Most appropriate installation solution for heavier products
- + Provides an opportunity for an air gap, which can increase the acoustic value of a product

Available methods: Z-Clips, Panel Clips, Standoffs, Screw & Washer, Magnet, Custom

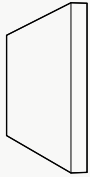


*Not all listed attachment methods may be applicable to this product.

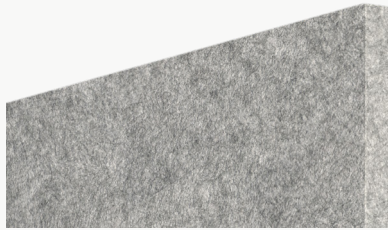
Material Layers

Soundcore®

Our recycled PET felt creates an acoustic barrier, defending against wandering white noise and irritating echoes.

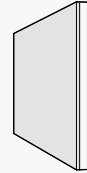


Single Layer
½" Thickness



PoshFelt® Exposed Edge

100% organic, natural wool design felt brings out the best experience in your space with color, comfort, and simple sustainability. Exposed edge products leave the Soundcore® layer uncovered, allowing for unique color combinations.

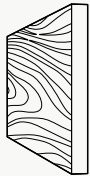


Multi-Layer
Adds ⅛"-¼" to Material Thickness



Soundcore® Wood Textures

Soundcore® wood textures provide the natural aesthetic of wood while maintaining all the acoustic benefits of PET felt. Custom texture opportunities are also available upon request.



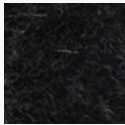
Single Layer
½" Thickness



PoshFelt® | 3mm Thickness



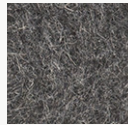
PSH005
Black Beauty



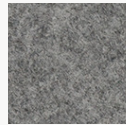
PSH161
Black Swan



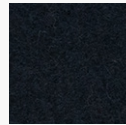
PSH266
Koala



PSH001
Gray Matter



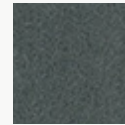
PSH176
Warmstone



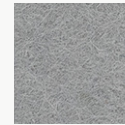
PSH627
Blackberry



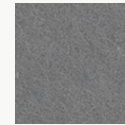
PSH265
Slag



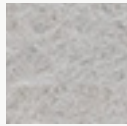
PSH513
Gravel



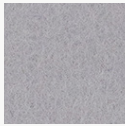
PSH512
Ash Plume



PSH004
Porpoise



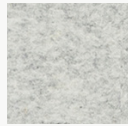
PSH625
Silver Chain



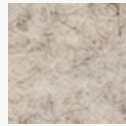
PSH609
Cityscape



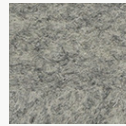
PSH300
Crevasse



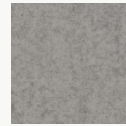
PSH299
Mountain Breeze



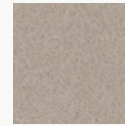
PSH515
Blizzard



PSH175
Dovetail



PSH624
Dapple Gray



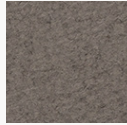
PSH127
Mocha



PSH635
Eggshell



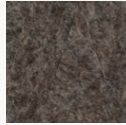
PSH178
Fawn



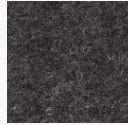
PSH520
Silt



PSH002
Heather



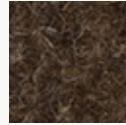
PSH003
Otter



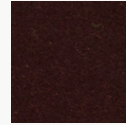
PSH179
Arctic Seal



PSH180
Iron Ore



PSH545
Henna



PSH249
French Press



PSH248
Mink



PSH146
Auburn



PSH521
Cocoa



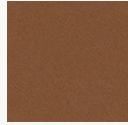
PSH269
Canyon



PSH253
Toffee



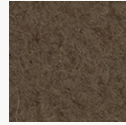
PSH602
Cafe



PSH268
Gingerbread



PSH255
Tropical Walnut



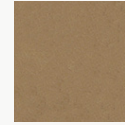
PSH504
Earth



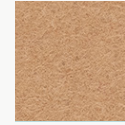
PSH505
Garrigue



PSH503
Savanna



PSH509
Cairo



PSH621
Pan



PSH281
Great Plains



PSH291
Gobi



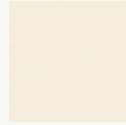
PSH630
Sand Dune



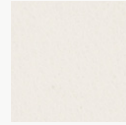
PSH006
Shiitake



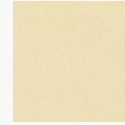
PSH519
Cupcake



PSH118
Ivory Lace



PSH174
Cotton



PSH293
Pound Cake

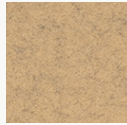


PSH637
Chiffon



PSH304
Sugar Cookie

PoshFelt® | 3mm Thickness



PSH301
Tumbleweed



PSH541
Banana Bread



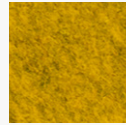
PSH622
Corn



PSH215
Raincoat



PSH305
Dandelion



PSH216
Lion's Den



PSH015
Honey



PSH217
Citrine



PSH507
Hive



PSH634
Amber



PSH261
Pale Ale



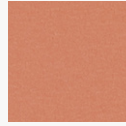
PSH638
Sunflower



PSH295
Sunrise Peach



PSH610
Coral



PSH632
Peach



PSH251
Summer Dream



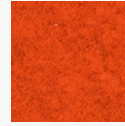
PSH218
Citrus



PSH532
Harvest



PSH014
Knockout Orange



PSH307
Orange Nectar



PSH633
Clementine



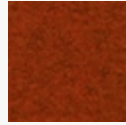
PSH245
Fire Agate



PSH525
Olympus



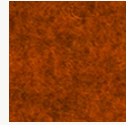
PSH640
Rusted



PSH528
Ferrous



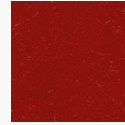
PSH296
Paprika



PSH220
Red Earth



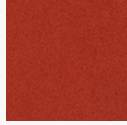
PSH530
Hot Iron



PSH537
Cardinal



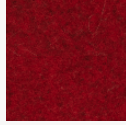
PSH535
Guppy



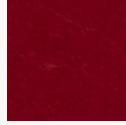
PSH139
Cayenne



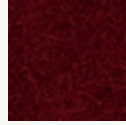
PSH008
Bonfire



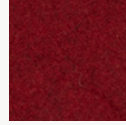
PSH308
Scarlet



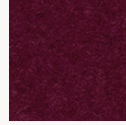
PSH009
Poinsettia



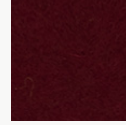
PSH540
Devil's Food



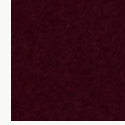
PSH527
Red Velvet



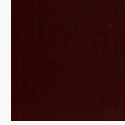
PSH644
Maroon



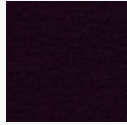
PSH210
Sangria



PSH211
Cherry Chutney



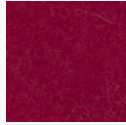
PSH212
Vino



PSH514
Red Wine



PSH617
Evening Gown



PSH649
Pomegranate



PSH273
Ultraviolet



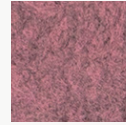
PSH137
Passion Flower



PSH272
Hotwire



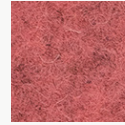
PSH302
Heather Pink



PSH292
Sakura Mist



PSH202
Crush



PSH560
Schiava

PoshFelt® | 3mm Thickness



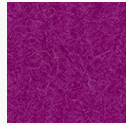
PSH647
Eden Rose



PSH643
Rhododendron



PSH559
Monroe



PSH544
Dragonfruit



PSH309
Allium



PSH205
Mulberry



PSH546
Tyrian Plum



PSH142
Plum Purple



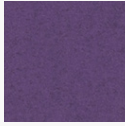
PSH523
Violet Sky



PSH612
Lilac



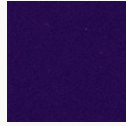
PSH286
Viper



PSH646
Lupine



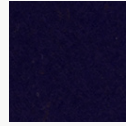
PSH274
Amethyst



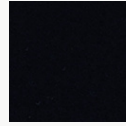
PSH275
Skyfall



PSH241
Tranquilo



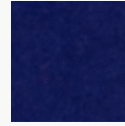
PSH550
Mariana



PSH277
Shade



PSH310
Deep Royal



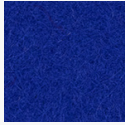
PSH160
Admiral Blue



PSH561
Neptune



PSH239
Speckled Navy



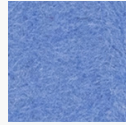
PSH548
Ultramarine



PSH645
Space



PSH508
Oahu



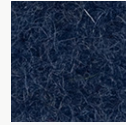
PSH510
Ozone



PSH615
Imagine



PSH614
Blueberry



PSH636
Navy Blue



PSH278
Squid Ink



PSH260
Twilight



PSH616
Fountain



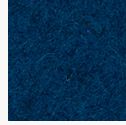
PSH604
Atlantic



PSH237
Hotspring



PSH238
Cobalt



PSH516
Actun



PSH502
Pacific



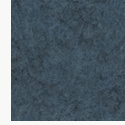
PSH511
Lagoon



PSH152
Blue Nile



PSH149
Jamaica Bay



PSH623
Steel Gray



PSH648
Aegean



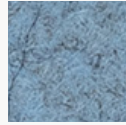
PSH236
Aquamarine



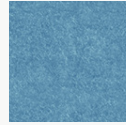
PSH016
Freshwater



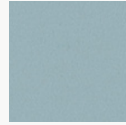
PSH306
Swell



PSH608
Diamond Dust



PSH605
Meander



PSH639
Glacier



PSH606
Midday



PSH650
Waterfall

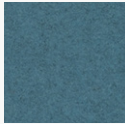


PSH287
Sea Breeze

PoshFelt® | 3mm Thickness



PSH628
Cozumel



PSH631
Adriatic



PSH552
Cancun



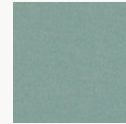
PSH564
Jazz



PSH517
Sky Stone



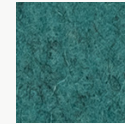
PSH232
Seaglass



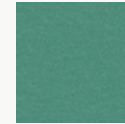
PSH641
Basil



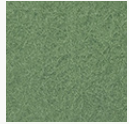
PSH629
Robin's Egg



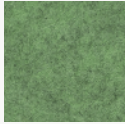
PSH642
Blue Spruce



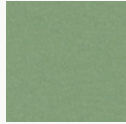
PSH618
Iguana



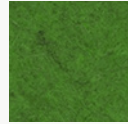
PSH213
Meadow



PSH303
Feather Moss



PSH619
Springtime



PSH223
Matrix



PSH164
Fresh Lime



PSH225
Everglade



PSH226
Grove



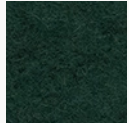
PSH298
Peacock



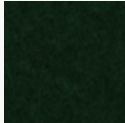
PSH234
Ocean Trench



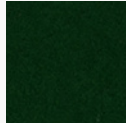
PSH311
Emerald



PSH626
Evergreen



PSH228
Forest Haze



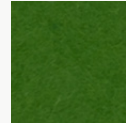
PSH227
Succulent



PSH563
Rosemary



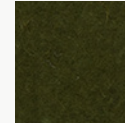
PSH555
Hemlocks



PSH012
Shamrock



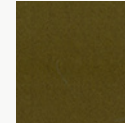
PSH554
Cyber Green



PSH501
Mire



PSH506
Bracken



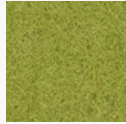
PSH312
Safari



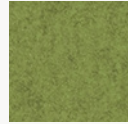
PSH611
Haybale



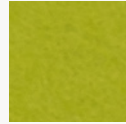
PSH230
Camouflage



PSH556
Avocado

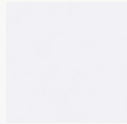


PSH562
Aurora

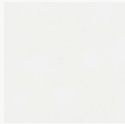


PSH013
Parakeet

Soundcore® | 1/2" Thickness



SND019
Linen



SND037
Paper



SND134
Oat



SND135
Vanilla Bean



SND105
Sand Dollar



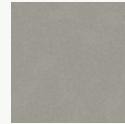
SND109
Macadamia



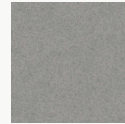
SND111
Lanai



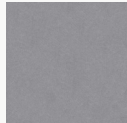
SND130
Buckskin



SND131
Abalone



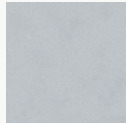
SND125
Chinchilla



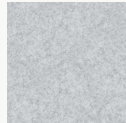
SND118
Anchor



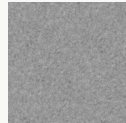
SND126
Wolfhound



SND110
Starry Night



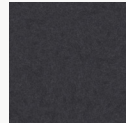
SND102
Morning Fog



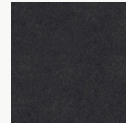
SND114
Lunar Dust



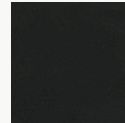
SND034
Granite Peak



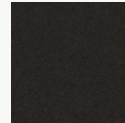
SND132
Cast Iron



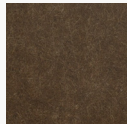
SND103
Storm Cloud



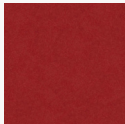
SND038
Inkwell



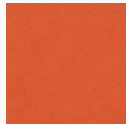
SND122
Briquette



SND127
Burnt Toast



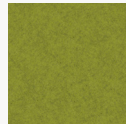
SND108
Ablaze



SND104
Pumpkin



SND106
Goldfinch



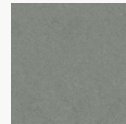
SND113
Gruner



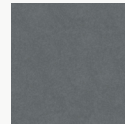
SND107
Grasshopper



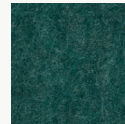
SND136
Clover



SND129
Dried Thyme



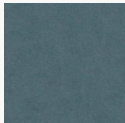
SND115
Mako



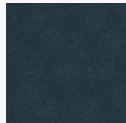
SND137
Cove



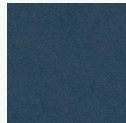
SND112
Tulum



SND121
Apatite



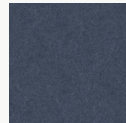
SND123
Chrysocolla



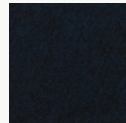
SND117
Serene



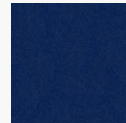
SND124
Ice Floe



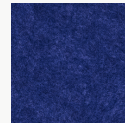
SND128
Arctic Ocean



SND133
Galactic



SND116
Blue Marlin



SND101
Commodore



SND042
Denim

Soundcore® Wood Textures | 1/2" Thickness



SND716
Dark Teak



SND792
Dark Oak



SND715
Dark Cherry



SND793
Vintage Maple



SND794
Warm Teak



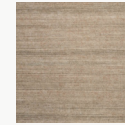
SND714
English Walnut



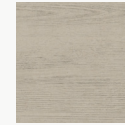
SND713
Honey Walnut



SND717
Warm Oak



SND790
Natural Teak



SND712
Natural Spruce



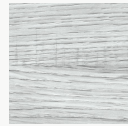
SND711
Bleached Cherry



SND795
Light Teak



SND709
White Maple



SND791
Gray Oak



SND710
Gray Teak