

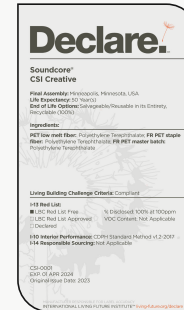
Product Specifications

Product Name	Stacked Surfaces 048
Product ID	SUR-STK-048
Acoustics	0.50 - 0.60 NRC*
Lead Time	Lead time is dependent on project size. Contact us for more information.
Durability	Contract

Warranty	Comes with industry-leading standard warranty.
Flammability	ASTM E84: Class A
Custom	Custom colors and manufacturing services available. Additional charges and lead times may apply.
Maintenance	Vacuum occasionally to remove airborne dust or debris. Mild detergents or soaps may be used to remove stains. For detailed care instructions, refer to the CSI Creative Maintenance Information document.

Material Specifications

	Soundcore®	PoshFelt®
Content	Recycled PET acoustic felt	100% Merino or Karakul wool acoustic felt
Weathering	Colorfast, non-deteriorating, non-hygroscopic	Colorfast, non-deteriorating, non-woven, moisture resistant
Environmental	Recycled PET acoustic felt is 60% post-consumer recycled content and is 100% recyclable. Contributes points toward LEED v4, CDPH v1.2, VOC free, non-toxic, non-allergenic, anti-microbial - does not attract mold and mildew. Compliant with Living Building Challenge criteria & DECLARE Red List Free.	100% organic wool design felt is a rapidly renewable resource and is 100% biodegradable/compostable. Contributes points toward LEED v4, CDPH v1.2, VOC free, no chemical irritants, no formaldehyde, and is free of other harmful substances. Compliant with Living Building Challenge criteria & DECLARE Red List Free.
Variation	PET felt panels are created through a manufacturing process known as 'felting'. This process results in a heathered appearance. Multiple color tones may appear in the same panel. Slight color variations should be expected.	Due to its 100% natural origin, the raw fibers of wool felt contain inclusions and color variations throughout the material. Color matching is not guaranteed between dye lots and inconsistencies may be more prominent in volumes that exceed the normal commercial standard.

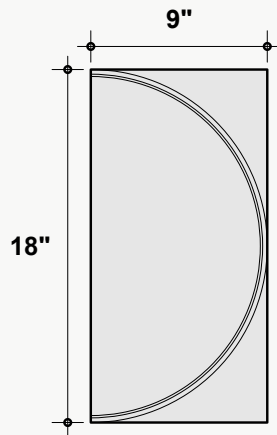


*Approximate - NRC rating may vary based on product dimensions and spacing. A higher NRC can be achieved with an air gap.

Dimensions

Standard Unit Dimensions

Typical ranges for height and width.

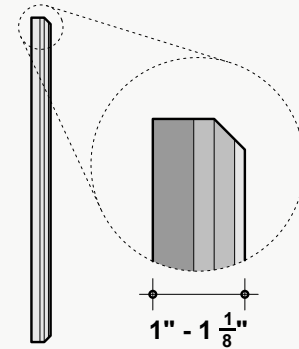


Custom Opportunity

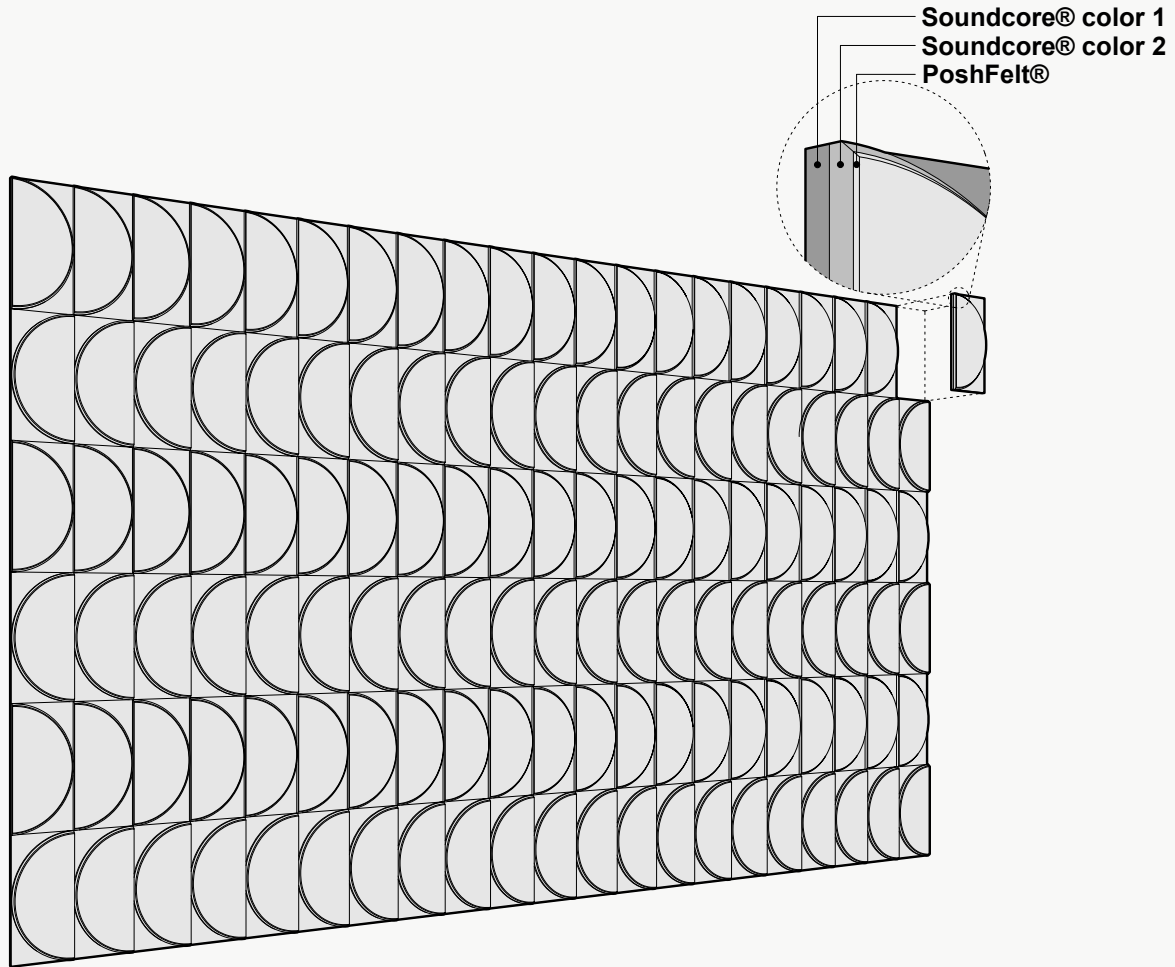
Product dimensions can be manipulated in order to fit your design aesthetic and site conditions.

Standard Unit Thicknesses

Thickness is dependent on material layer selection.

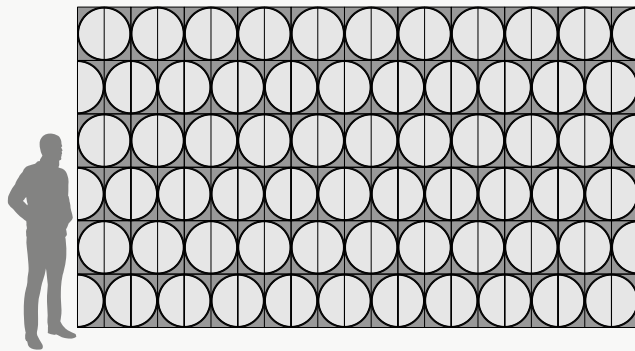


Product Details

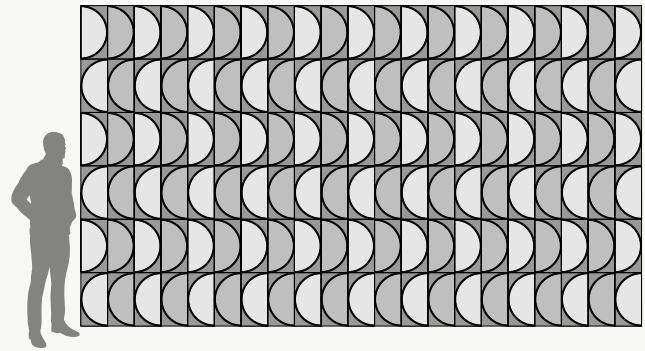


Configuration Options

The layouts shown are a summation of individual units. Individual units may be assembled in various arrangements to dictate the larger design. Configurations shown are suggested, but can be rearranged to achieve a custom layout.



Uniform



Patterned

Installation Options*

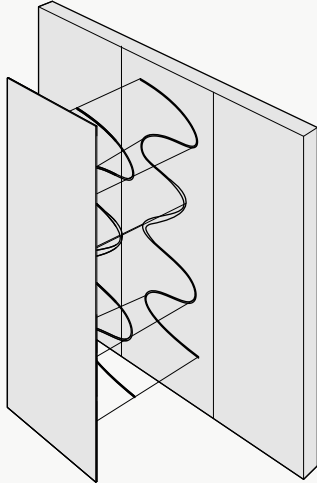
All products and installation methods can be **customized** to meet the unique requirements of your space.

Adhesive Direct Advantages

Attachment solution using an adhesive to apply directly to an existing surface or substrate.

- + Fastest installation time
- + No gap between target surface and product
- + Lowest profile installation option
- + Easiest to install
- + Most versatile installation option

Available methods: Construction Adhesive, Peel & Stick, Custom

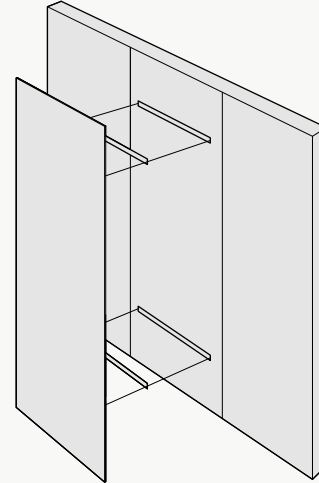


Mechanical Direct Advantages

Attachment solution using physical hardware to attach to an existing surface or substrate.

- + No clamping or dry time necessary
- + Easy to remove and does not damage the substrate when removed
- + Most appropriate installation solution for heavier products
- + Provides an opportunity for an air gap, which can increase the acoustic value of a product

Available methods: Z-Clips, Panel Clips, Standoffs, Screw & Washer, Magnet, Custom

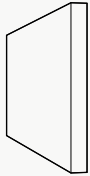


*Not all listed attachment methods may be applicable to this product.

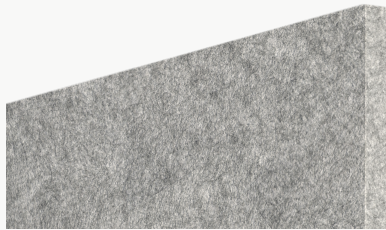
Material Layers

Soundcore®

Our recycled PET felt creates an acoustic barrier, defending against wandering white noise and irritating echoes.

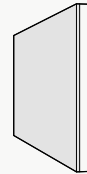


Single Layer
½" Thickness



PoshFelt® Exposed Edge

100% organic, natural wool design felt brings out the best experience in your space with color, comfort, and simple sustainability. Exposed edge products leave the Soundcore® layer uncovered, allowing for unique color combinations.

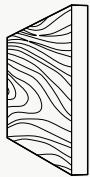


Multi-Layer
Adds ⅛"-¼" to Material Thickness



Soundcore® Wood Textures

Soundcore® wood textures provide the natural aesthetic of wood while maintaining all the acoustic benefits of PET felt. Custom texture opportunities are also available upon request.



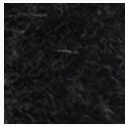
Single Layer
½" Thickness



PoshFelt® | 3mm Thickness



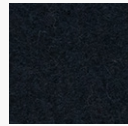
PSH005
Black Beauty



PSH161
Black Swan



PSH266
Koala



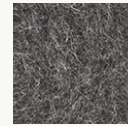
PSH627
Blackberry



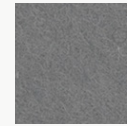
PSH265
Slag



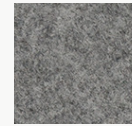
PSH513
Gravel



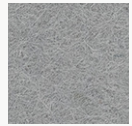
PSH001
Gray Matter



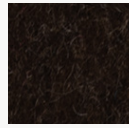
PSH004
Porpoise



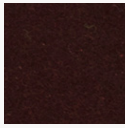
PSH176
Warmstone



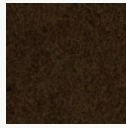
PSH512
Ash Plume



PSH545
Henna



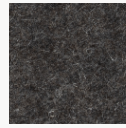
PSH249
French Press



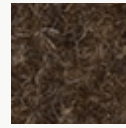
PSH146
Auburn



PSH521
Cocoa



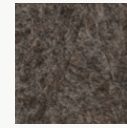
PSH179
Arctic Seal



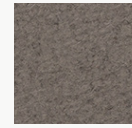
PSH180
Iron Ore



PSH505
Garrigue



PSH003
Otter



PSH520
Silt



PSH002
Heather



PSH504
Earth



PSH255
Tropical Walnut



PSH269
Canyon



PSH253
Toffee



PSH602
Cafe



PSH281
Great Plains



PSH503
Savanna



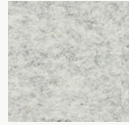
PSH509
Cairo



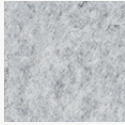
PSH621
Pan



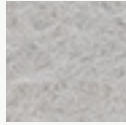
PSH291
Gobi



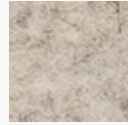
PSH299
Mountain Breeze



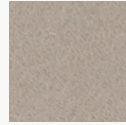
PSH300
Crevasse



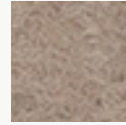
PSH625
Silver Chain



PSH515
Blizzard



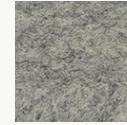
PSH127
Mocha



PSH635
Eggshell



PSH178
Fawn



PSH175
Dovetail



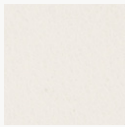
PSH624
Dapple Gray



PSH609
Cityscape



PSH118
Ivory Lace



PSH174
Cotton



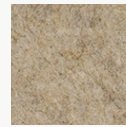
PSH293
Pound Cake



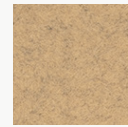
PSH519*
Cupcake



PSH630
Sand Dune



PSH006
Shiitake



PSH301
Tumbleweed



PSH637
Chiffon



PSH304
Sugar Cookie



PSH541
Banana Bread

*6-roll MOQ

PoshFelt® | 3mm Thickness



PSH215
Raincoat



PSH622
Corn



PSH295
Sunrise Peach



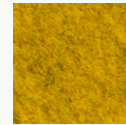
PSH507
Hive



PSH015
Honey



PSH305
Dandelion



PSH216
Lion's Den



PSH634
Amber



PSH261
Pale Ale



PSH638
Sunflower



PSH610
Coral



PSH632
Peach



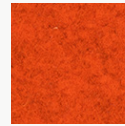
PSH218
Citrus



PSH532
Harvest



PSH014
Knockout Orange



PSH307
Orange Nectar



PSH633
Clementine



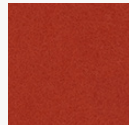
PSH245
Fire Agate



PSH525
Olympus



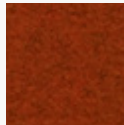
PSH640
Rusted



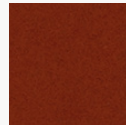
PSH139
Cayenne



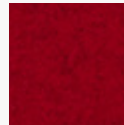
PSH535
Guppy



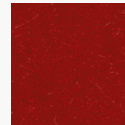
PSH528
Ferrous



PSH296
Paprika



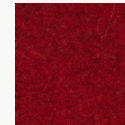
PSH530
Hot Iron



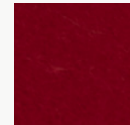
PSH537
Cardinal



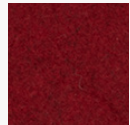
PSH008
Bonfire



PSH308
Scarlet



PSH009
Poinsettia



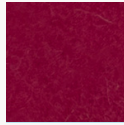
PSH527
Red Velvet



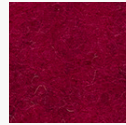
PSH137
Passion Flower



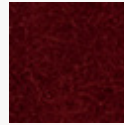
PSH273
Ultraviolet



PSH649
Pomegranate



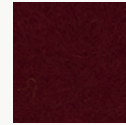
PSH617
Evening Gown



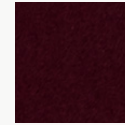
PSH540
Devil's Food



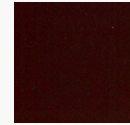
PSH644
Maroon



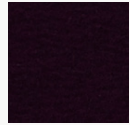
PSH210
Sangria



PSH211
Cherry Chutney



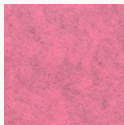
PSH212
Vino



PSH514
Red Wine



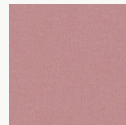
PSH272
Hotwire



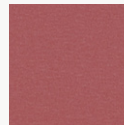
PSH302
Heather Pink



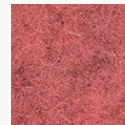
PSH202
Crush



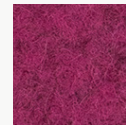
PSH647
Eden Rose



PSH643
Rhododendron



PSH560
Schiava



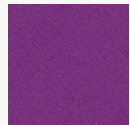
PSH559
Monroe



PSH544
Dragonfruit

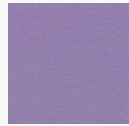


PSH309
Allium



PSH205
Mulberry

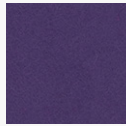
PoshFelt® | 3mm Thickness



PSH612
Lilac



PSH646
Lupine



PSH274
Amethyst



PSH523
Violet Sky



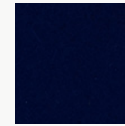
PSH546
Tyrian Plum



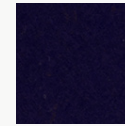
PSH142
Plum Purple



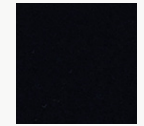
PSH286
Viper



PSH241
Tranquilo



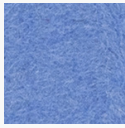
PSH550
Mariana



PSH277
Shade



PSH615
Imagine



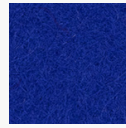
PSH510
Ozone



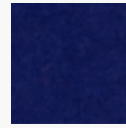
PSH237
Hotspring



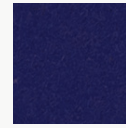
PSH508
Oahu



PSH548
Ultramarine



PSH160
Admiral Blue



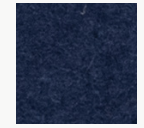
PSH239
Speckled Navy



PSH561
Neptune



PSH645
Space



PSH614
Blueberry



PSH502
Pacific



PSH238
Cobalt



PSH152
Blue Nile



PSH616
Fountain



PSH516
Actun



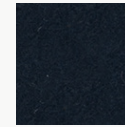
PSH511
Lagoon



PSH636
Navy Blue



PSH260
Twilight



PSH310
Deep Royal



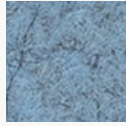
PSH278
Squid Ink



PSH606
Midday



PSH306
Swell



PSH608
Diamond Dust



PSH605
Meander



PSH628
Cozumel



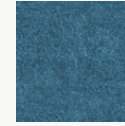
PSH016
Freshwater



PSH650
Waterfall



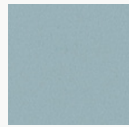
PSH149
Jamaica Bay



PSH604
Atlantic



PSH648
Aegean



PSH639
Glacier



PSH287
Sea Breeze



PSH631
Adriatic



PSH232
Seaglass



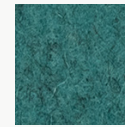
PSH629
Robin's Egg



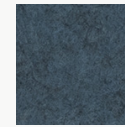
PSH517
Sky Stone



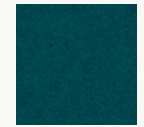
PSH552
Cancun



PSH642
Blue Spruce



PSH623
Steel Gray



PSH564
Jazz

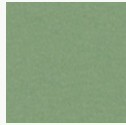
PoshFelt® | 3mm Thickness



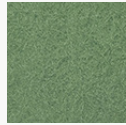
PSH618
Iguana



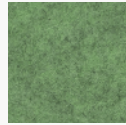
PSH641
Basil



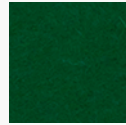
PSH619
Springtime



PSH213
Meadow



PSH303
Feather Moss



PSH226
Grove



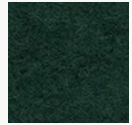
PSH298
Peacock



PSH234
Ocean Trench



PSH311
Emerald



PSH626
Evergreen



PSH225
Everglade



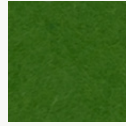
PSH164
Fresh Lime



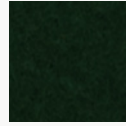
PSH554
Cyber Green



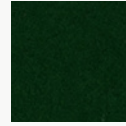
PSH555
Hemlocks



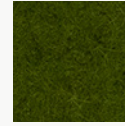
PSH012
Shamrock



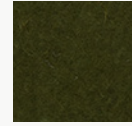
PSH228
Forest Haze



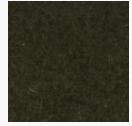
PSH227
Succulent



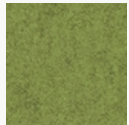
PSH563
Rosemary



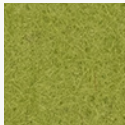
PSH501
Mire



PSH506
Bracken



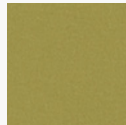
PSH562
Aurora



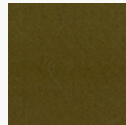
PSH556
Avocado



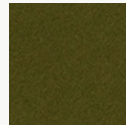
PSH013
Parakeet



PSH611
Haybale



PSH312
Safari






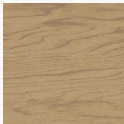












PSH230
Camouflage

Soundcore® | 1/2" Thickness

									
SND019 Linen	SND037 Paper	SND134 Oat	SND135 Vanilla Bean	SND105 Sand Dollar	SND109 Macadamia	SND111 Lanai	SND130 Buckskin	SND131 Abalone	SND125 Chinchilla
									
SND126 Wolfhound	SND118 Anchor	SND110 Starry Night	SND102 Morning Fog	SND114 Lunar Dust	SND034 Granite Peak	SND132 Cast Iron	SND103 Storm Cloud	SND038 Inkwell	SND122 Briquette
									
SND127 Burnt Thost	SND108 Ablaze	SND104 Pumpkin	SND141 Terracotta	SND106 Goldfinch	SND107 Grasshopper	SND113 Gruner	SND143 Olive	SND138 Fern	SND136 Clover
									
SND129 Dried Thyme	SND137 Cove	SND112 Tulum	SND139 Tidal	SND121 Apatite	SND123 Chrysocolla	SND117 Serene	SND124 Ice Floe	SND115 Mako	SND128 Arctic Ocean
									
SND133 Galactic	SND140 Marine	SND101 Commodore	SND042 Denim	SND142 Fig					

Soundcore® Wood Textures | 1/2" Thickness

									
SND716 Dark Teak	SND792 Dark Oak	SND715 Dark Cherry	SND793 Vintage Maple	SND794 Warm Teak	SND714 English Walnut	SND795 Light Teak	SND711 Bleached Cherry	SND713 Honey Walnut	SND796 Vintage Cherry
									
SND717 Warm Oak	SND790 Natural Teak	SND712 Natural Spruce	SND709 White Maple	SND791 Gray Oak	SND710 Gray Teak				